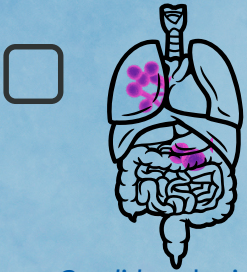
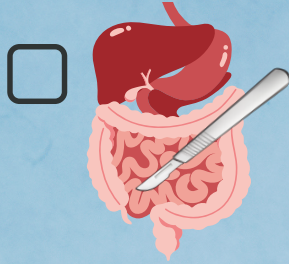


# Think About Who Is at Risk for Invasive Candidiasis (IC)

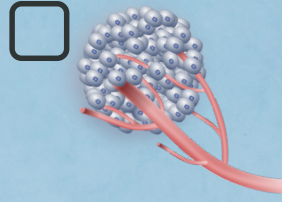
Most patients in the ICU have more than one IC risk factor. How many of these risk factors does your patient have?



Candida colonization (multifocal)\*



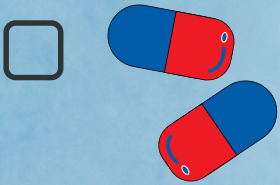
Gastrointestinal surgery or perforation



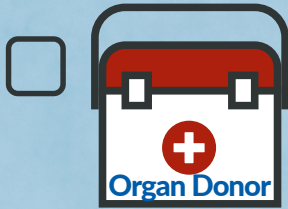
Solid tumors



Central venous catheter



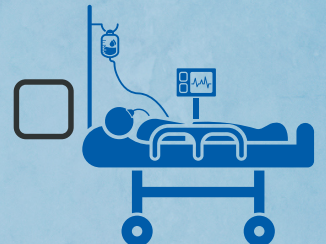
Broad-spectrum antibiotics



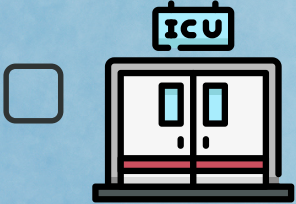
Transplant recipient (SOT or SCT)



Immunosuppressants



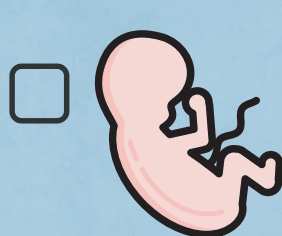
Critical illness



Long-term ICU stay



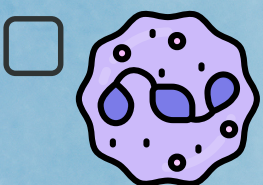
Diabetes mellitus



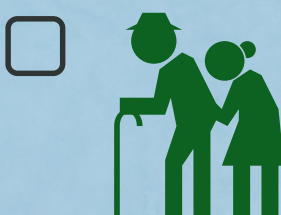
Low birth weight/premature neonate



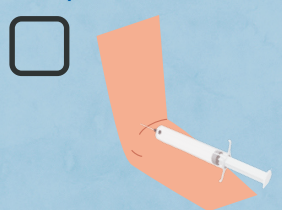
Pancreatitis



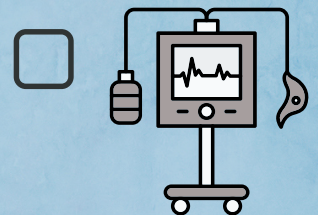
Neutropenia



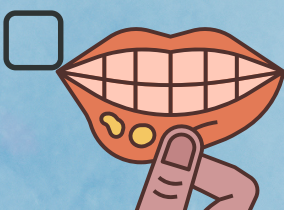
Older age



Injection drug abuse



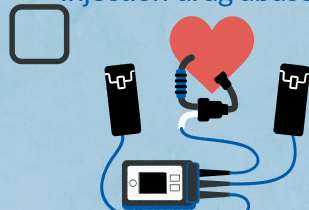
Mechanical ventilation



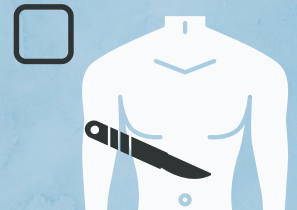
Mucositis



Hemodialysis



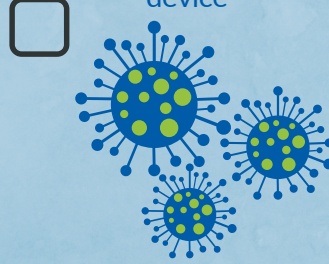
Left ventricular assist device



Major surgery



Total parenteral nutrition



COVID-19

SCT = stem cell transplant; SOT = solid organ transplant.

\*Multifocal colonization means *Candida* has colonized 2 or more noncontiguous body sites.

Gonazelz-Lara MF, Ostrosky-Zeichner L. *Semin Respir Crit Care Med.* 2020;41:3-12.

This educational initiative was funded in part by a cooperative agreement with the Centers for Disease Control and Prevention (CDC-RFA-CK20-2003) to the University of Alabama at Birmingham. The University of Alabama at Birmingham is collaborating with the Mycoses Study Group Education & Research Consortium and Terranova Medica, LLC, on this initiative. The Centers for Disease Control and Prevention is an agency within the Department of Health and Human Services (HHS). The contents of this resource center do not necessarily represent the policy of CDC or HHS and should not be considered an endorsement by the Federal Government.